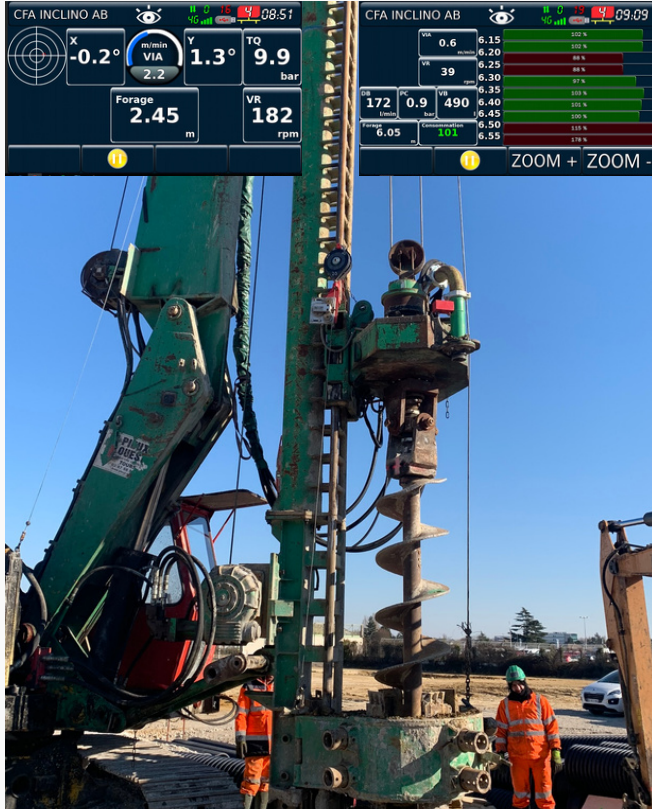


PocketLIM-6G - CFA



CFA (Auger cast) piles application

CFA (AUGER CAST) PILES PARAMETERS MONITORING & ACQUISITION



Before drilling:

- ✓ 2D drill mast positionning (X,Y inclinometry);

While drilling:

- ✓ Drill mast inclinometry (display);
- ✓ Advance speed, Auger Penetration Rate;
- ✓ Torque of the auger;
- ✓ Rotation Speed of the auger.

While concreting:

- ✓ Drill mast inclinometry (display);
- ✓ Ascent Speed, Auger Extraction Rate;
- ✓ Torque and Rotation Speed of the auger;
- ✓ Concrete Pressure;
- ✓ Instant Concrete Consumption;
- ✓ Percentage of filling according to the theoretical diameter of the pile.

THE STRENGTHS OF THE PocketLIM-6G - CFA SOLUTION

1) **CANBUS technology (CAN OPEN)**: two CANBUS sockets are available on the **PocketLIM-6G**.

The advantages of CANBUS technology are:

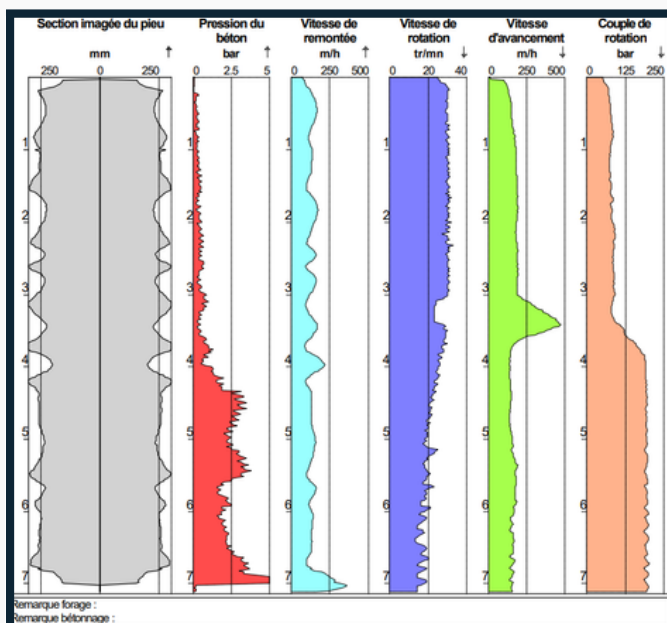
- Compatibility with factory-installed sensors by machine manufacturers;
- If it is necessary to add sensors, their installation is simplified and quick;
- Real-time detection of faults that may appear on the machine;
- 100% compatibility with the J1939 standard for motors, allowing faults to be detected in real time and providing information on parameters such as consumption, hours of use, etc... thanks to the **Drill@LIM** application.

2) The **PocketLIM-6G** ecosystem which is a very communicating device with:

- The **Mirroring** function which allows the **PocketLIM-6G** screen to be repeated remotely with control on a laptop, tablet or smartphone;
- The **LIM@Mail** service which automatically transmits pre-processed data files (BOR, CSV and PDF formats) via Wifi or GPRS (4G) in the cloud;
- The **Drill@LIM** service, which monitors the machines by providing real-time information on faults originating from the engine and other essential parts of the drill.

3) Data processing in the cloud thanks to the **GEO-LOG platform (versions 4 and 5)** accessible from any connected laptop, tablet or smartphone.

4) The use of the **BOR open exchange file format**, the description of which is given on the site <https://bor-form.at/en/>. This is to facilitate the exchange of data between all applications and software in the business.



*Example of log report produced by the application **GEO-LOG 5** with the automatic representation of the pile profile.*