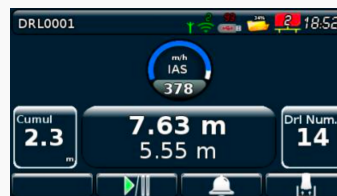


VisuaLIM 5G



Drill mast positioning (3D) & drilling depth indicator



Automatic depth stop



Production stats

Sensors

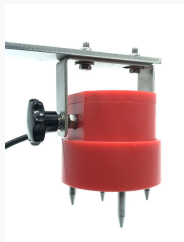
Drill mast positioning



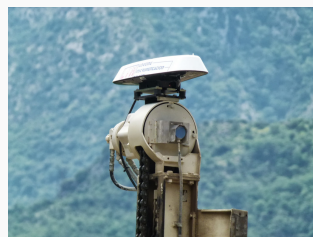
2D inclination box



Boom sensor with encoder



Aiming system (3D)



GPS compass antenna

Depth measurement (optical encoder)



MAIN FEATURES

The **VisuaLIM 5G** is a drilling indicator for drill & blast. This drilling production indicator has been specifically designed to fit any type of drill & blast production drill rig both with or without an articulated boom.

Before drilling :

- ✓ 2D drill mast positioning assistance by displaying X and Y angles;
 - ✓ 3D (2D with Azimuth compensation) drill mast positioning assistance by displaying X and Y angles for drills with cabin and articulated boom . The reference azimuth is determined either by optical sight of the operator or by the use of a GPS Compass system (GPS receiving antenna positioned at the top of the drill mast).
- The innovative GPS Compass method ensures the maximum accuracy of the positioning by avoiding the human error.

While drilling :

- ✓ Depth control with display (in m or ft) of the current borehole depth, current bit depth in relation to the bottom of the borehole and instantaneous penetration rate of the bit. The depth stop function allows the driller to preset the target depth in order to be notified when it is reached. This alarm can be complemented by an automatic function that automatically stops drilling.

After drilling and at the end of the shift :

- ✓ Display and storage of production statistics such as total number of holes, accumulated depth, average speed (instantaneous and commercial), drilling time per hole, average hole drill time, total drilling time, number of rods, ...

Data is stored in CSV file format and can be copied and synchronized to any USB flash drive.

TECHNICAL SPECIFICATIONS

- ✓ 32 bits ARM microprocessor
- ✓ Embedded LINUX kernel OS (V 2.6)
- ✓ 1 x external USB host port (for USB flash drive)
- ✓ Internal memory : 1Gb
- ✓ 480 x 272 (16/9) touch 4.3" screen, colour 16 bits, TFT technology
- ✓ 1 x LIM CANBUS connector
- ✓ Weight: 1 kg (2.2 lbs)
- ✓ Dimensions : 157x170x70mm (6.18x6.69x2.75 ")

