

Installation of the USB driver

1 Using Microsoft Windows XP

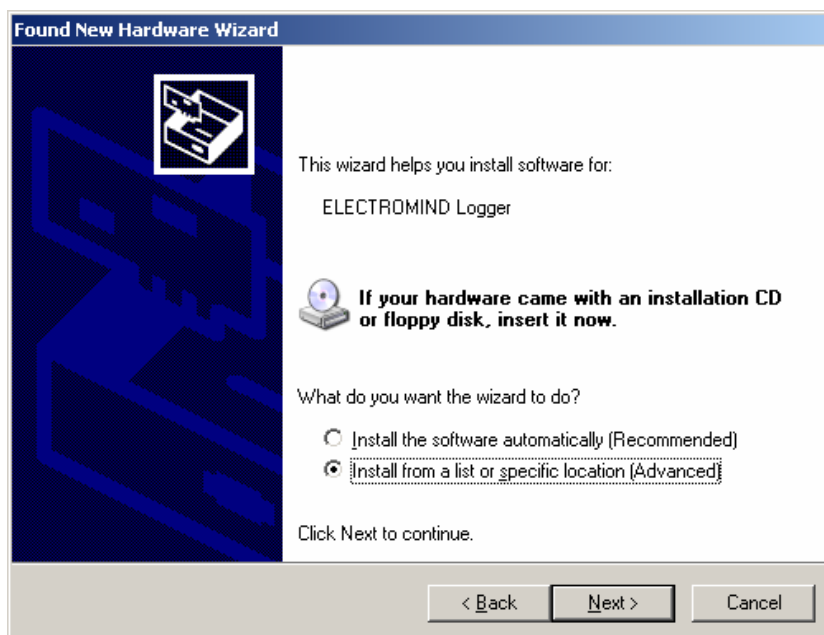
NB: Install the OPTV logging software before connecting and powering up the eMindlogger acquisition system.

When the logger is connected and powered up for the first time, your operating system will request the location of the USB drivers. These will be found in the sub-directory *driver* under the main programme installation directory.

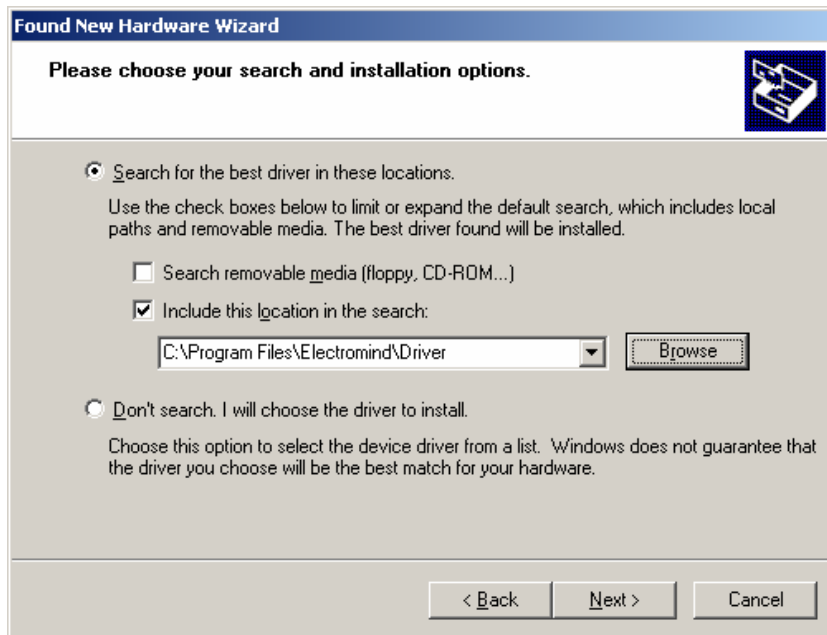
The installation will then proceed as follows, starting with the dialogue box as shown below:



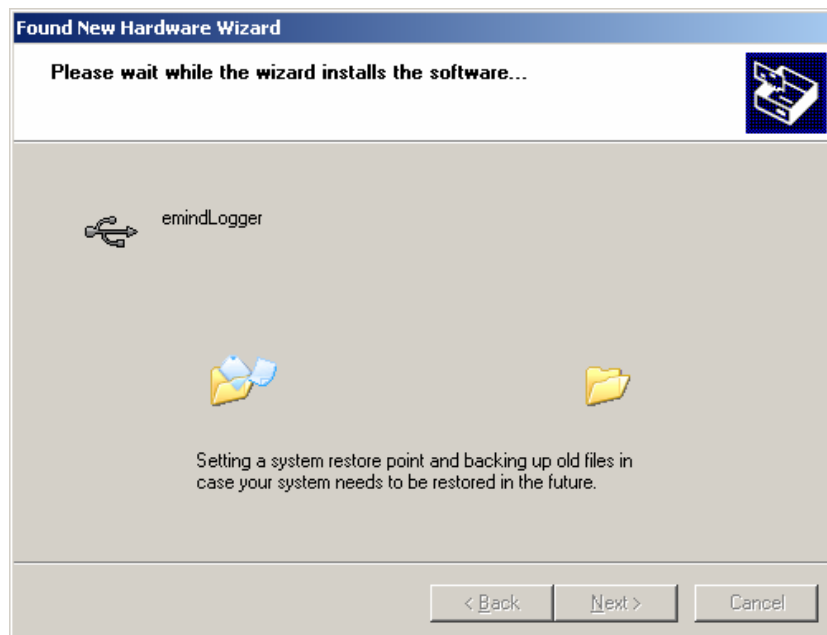
Select No, not this time



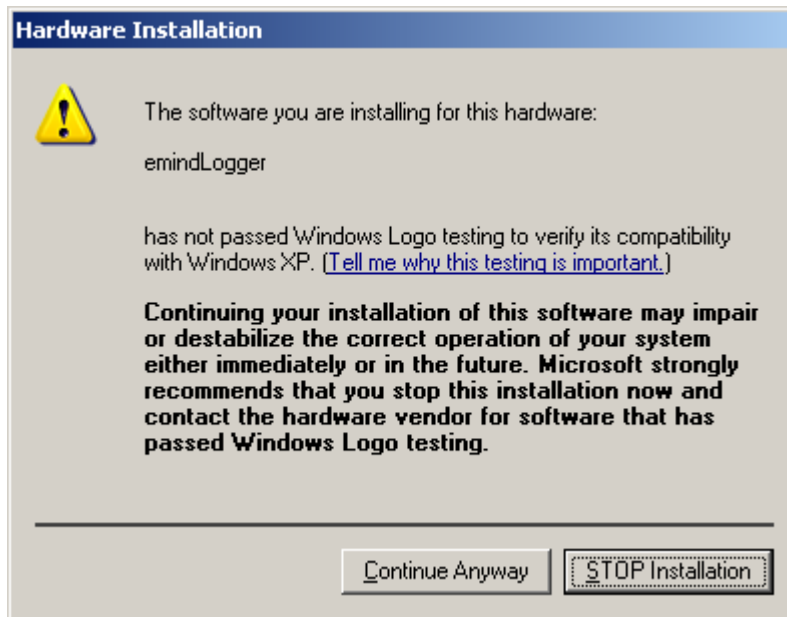
Select « Install from a list or specific location »



Be sure to include the location of the logger USB drivers in the search path as above.



The installation should then start automatically.



Should this warning appear, it can be safely ignored. The FTDI USB drivers are fully compatible with Microsoft Windows XP.

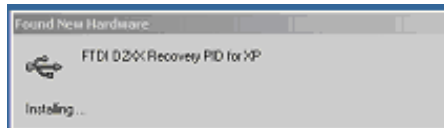


This dialogue confirms that the USB drivers have been successfully installed.

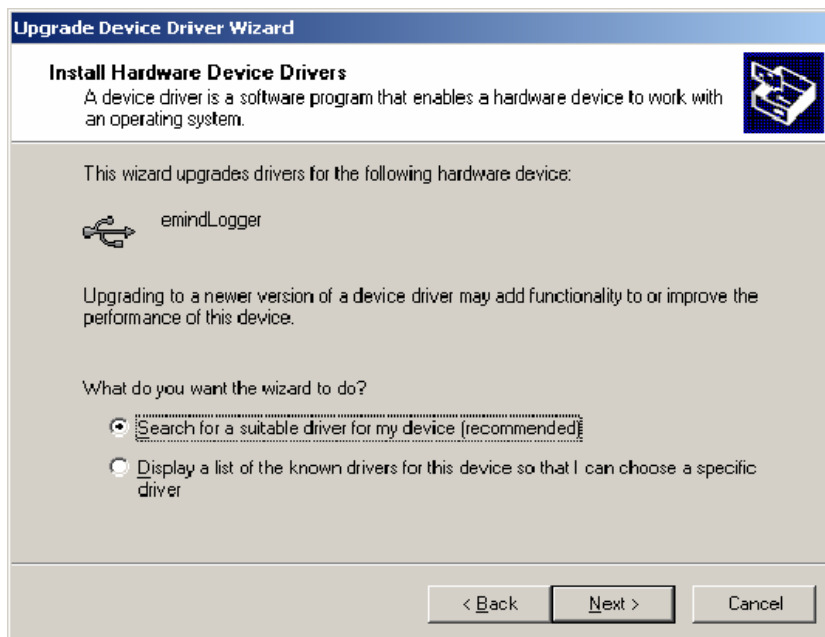
2 Using Microsoft Windows 2000

NB: Install the OPTV logging software before connecting and powering up the eMindlogger acquisition system.

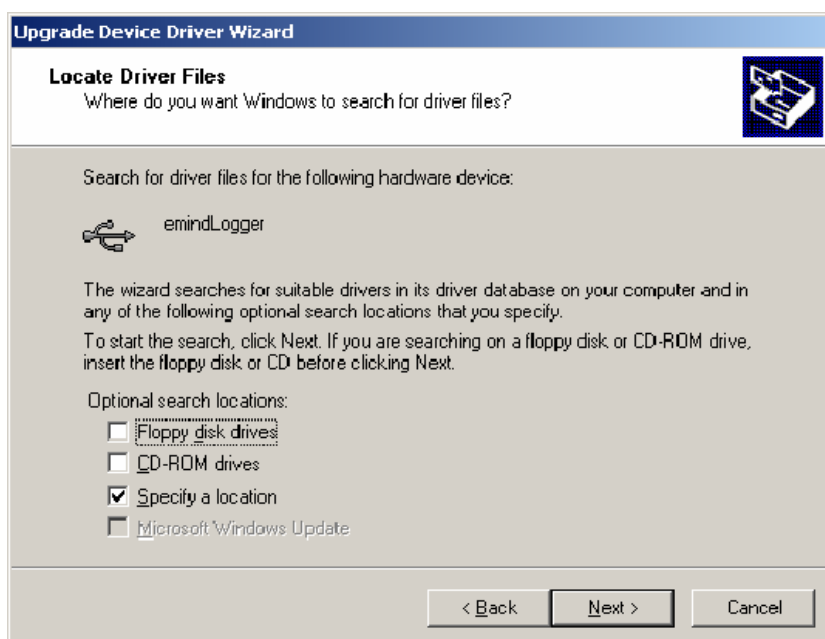
When the logger is connected and powered up for the first time, your operating system will request the location of the USB drivers. These will be found in the sub-directory *driver* under the main programme installation directory.



Message indicating that a new USB device has been detected.



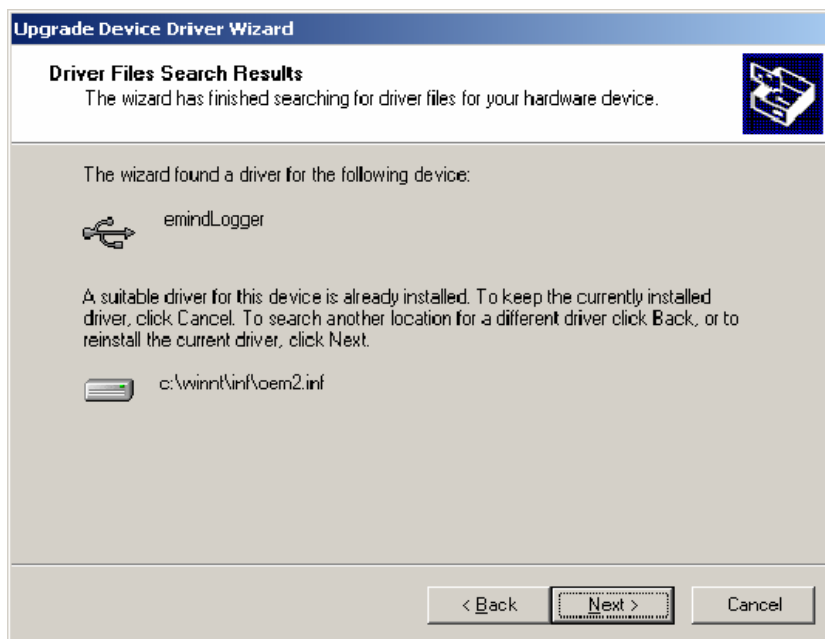
Choose the option "Search for a suitable driver for my device (recommended)"



Choose « Specify a location »



Be sure to include the location of the logger USB drivers in the search path as above.

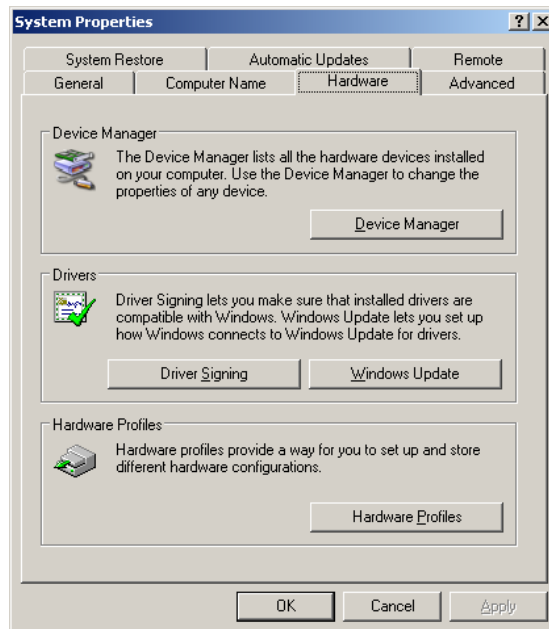


Click on « Next » to complete the USB driver installation.

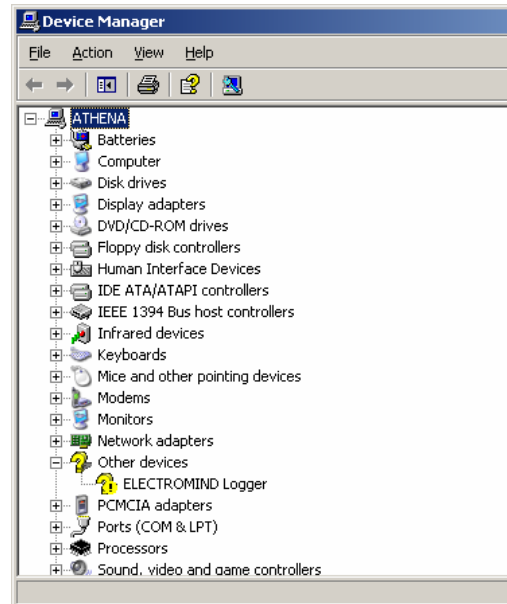
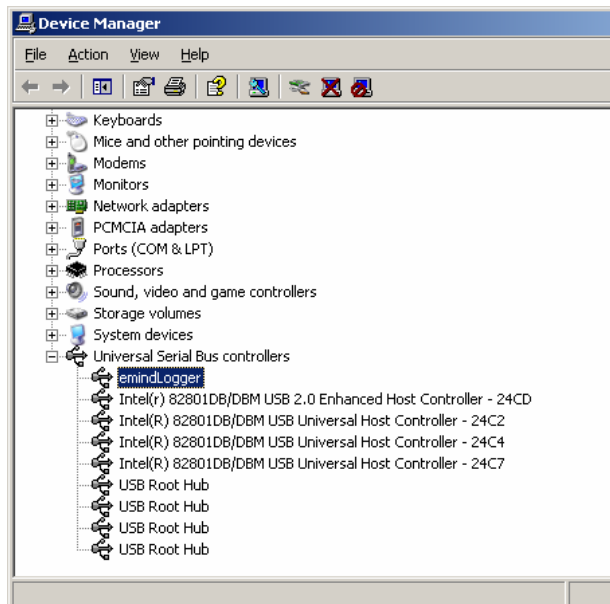
3 Updating the USB driver

Should the USB driver require an update or reinstallation, proceed as follows.

Begin by clicking with the right hand mouse button on the "MyComputer" desktop icon and open the "System Properties" dialogue box.



At this point, click on the « Hardware » tab, then on the button « Device Manager » in order to access this feature.



If necessary, click on the **+** sign against the item « Universal Serial Bus controllers » in order to see the full listing of these devices. Next, click with the right mouse button on whichever of "eMind logger" or "FTDI D2XX" appears in the list. Should neither of these devices appear

in the list under « Universal Serial Bus controllers », it could be the case that the operating system has consigned the device to the section reserved for "Other devices".

Under Microsoft Windows XP, the following dialogue box will appear:



Proceed as previously explained in section 4.2.1

Under Microsoft Windows 2000, the following dialogue box will appear:



Proceed as previously explained in section 4.2.2